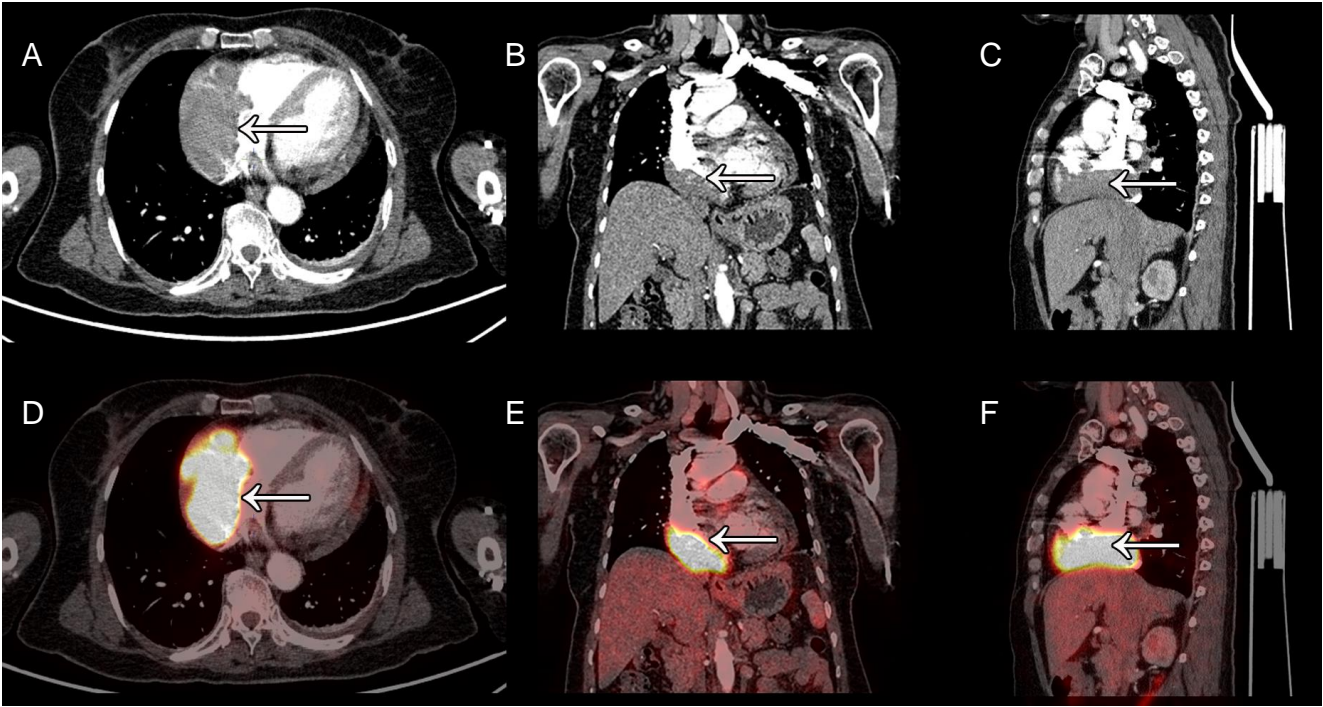


Figure S5



**Figure S5:** PET/CT imaging of a patient diagnosed with primary cardiac diffuse large B-cell lymphoma (DLBCL). This patient presented with a hypermetabolic mass within the right antrum and ventricle of the heart, infiltrating within the whole layer of the myocardium. Thus, an intraluminal endomyocardial biopsy was made at the mass (arrow). A~C: contrast-enhanced CT images of the cardiac mass in trans axial, coronal and sagittal plane. E~F: PET images fused with contrast-enhanced CT in trans axial, coronal and sagittal plane.